

- Oversized alphanumeric LCD, knobs and keys
- Large 2.8 inch internal speaker producing HUGE AUDIO
- 30 W Loud Hailer with listen back and 4 fog horns, Bells & Whistles
- Removable ClearVoice speaker microphone with 16/9 key and channel selection
- Display shows channel names, and repeats GPS information\*
- Capable of connecting 2 optional enhanced RAM+ second station remote microphones
- DSC distress call automatically broadcasts lat/long and vessel ID\*
- DSC position request function and NMEA data input/output to connect to GPS Plotter\*
- Versatile user-programmable Scanning, Priority Scan and Dual Watch
- NOAA Weather channels and Alert
- One-button access to Channel 16 and 9
- One-button access to user selectable preset channels
- Access to all USA, Canadian and International channels

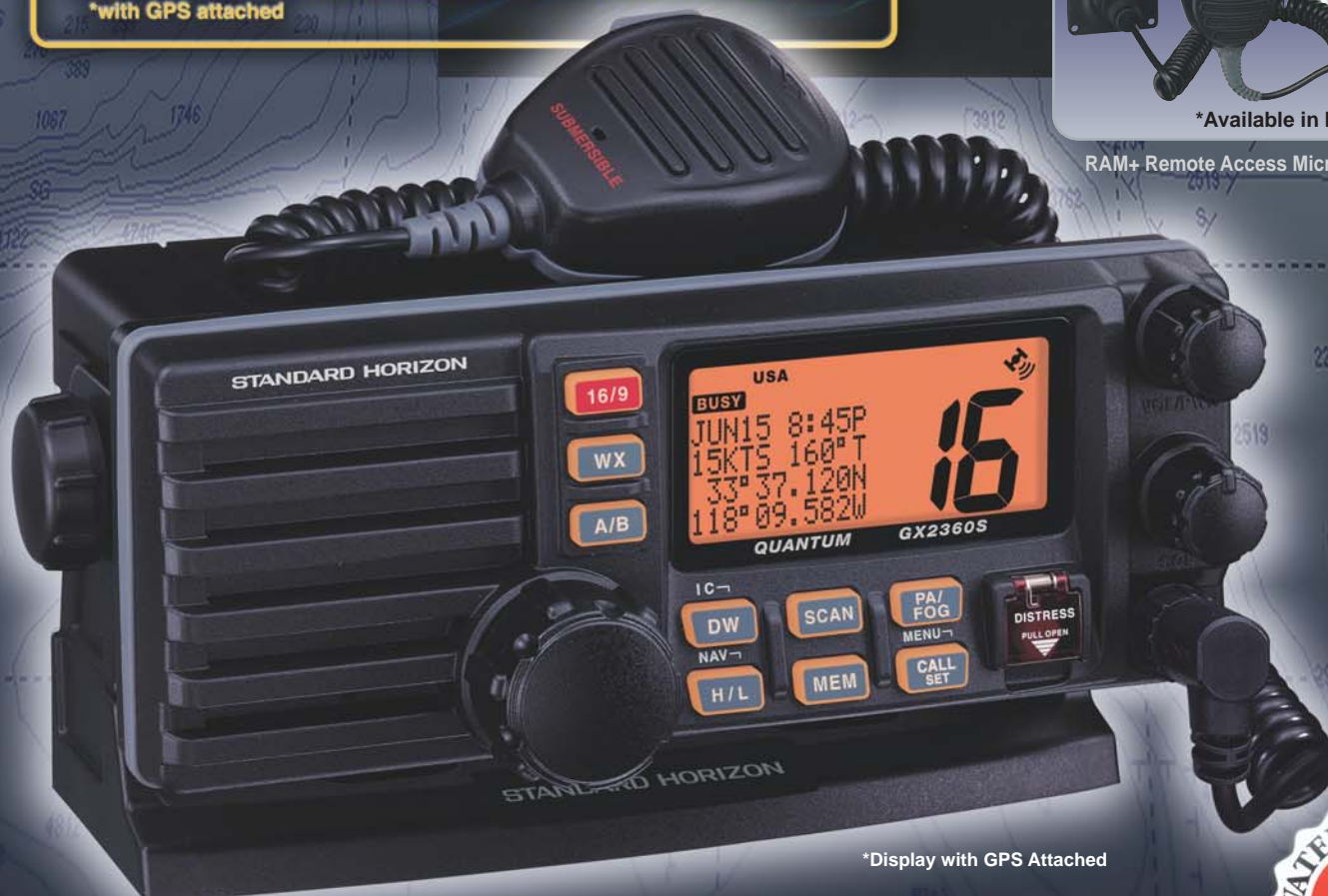
\*with GPS attached

**CLEARVoice™**  
NOISE REDUCTION TECHNOLOGY



\*Available in black or white

RAM+ Remote Access Microphone CMP25



\*Display with GPS Attached

*Nothing takes to water like Horizon!*



STANDARD HORIZON



# At the head of the class!



## Oversized alphanumeric LCD, knobs and keys

Designed to take the day in and day out punishment in the harshest environments. The QUANTUM can take submersions or more likely direct water from waves crashing over the bow. Oversized knobs allow for easy adjusting of Volume, Squelch, channel changing and moving through radio and Digital Selective Calling functions. The LCD is one of the largest in the industry with 4 lines of Alpha-Numeric characters that boldly display channel names, DSC call information and even GPS position with Speed Over Ground and Course Over Ground. Programmable scan, Dual Watch and Ch16 priority scan allows you to scan any number or combination of channels so you will not miss a call.



## 30W Loud Hailer with listen back and 4 fog horns, bells & whistles

The QUANTUM has a 30W loud hailer with 4 pre-programmed Fog signals; bells and whistles even listen back. For advanced users the QUANTUM allows you to select the fog horn frequency for true versatility. Most VHF's with a PA do not allow monitoring VHF transmissions; this has been solved with the QUANTUM. Simply tune to a channel before selecting the PA mode and when a VHF transmission is received you will hear the conversation. In addition, all the PA functions can be controlled by using the optional Enhanced RAM+ remote speaker mic.



## Capable of being connected to 2 optional enhanced RAM+ second station microphones

This advanced remote operates as a full second station to the QUANTUM at the fly bridge, cockpit, tower or location of your choice. The submersible RAM+ has a oversized display and keys that allow the user to remotely control all VHF functions including PA and FOG, Digital Selective Calling functions, show channel names and repeat GPS information.



## Unique Intercom System

There is no need for a dedicated Intercom system when you have the QUANTUM and RAM+ microphones! Want to talk from the QUANTUM to one RAM+ or both simultaneously or from a RAM+ to RAM+ or RAM+ and QUANTUM you can! STANDARD HORIZON has even built in a Calling feature that allows you to individually alert the QUANTUM or RAM+ from the station that is being used. Clearly the next step in communication on your vessel!



# QUANTUM

25 Watt VHF FM Marine Transceiver

## GX2360S



### One button access to CH16/9, NOAA WX and Preset keys

The oversized and strategically positioned location of the 16/ 9, WX and A/ B keys make operating the radio easy. Press the 16/ 9 key to select the international distress and calling ( channel 16) from any channel, press and hold the 16/ 9 key to select CH9 the US calling channel, a third press reverts the radio back to the last used channel, SIMPLE!. Want to check up on the local weather report, press the WX key and change to the desired WX channel to listen to the forecast. The A/ B key comes in handy for any user that wants quick access to two channels. The A/ B key comes in handy for any operator that wants quick access to any two user selected channels, recalling these channels is similar to the preset keys on a car stereo.



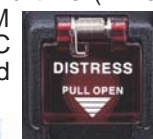
### HUGE AUDIO!

Hearing communications over the engine roar is not an issue with the QUANTUM. The QUANTUM is fitted with a front projecting 2.8 inch waterproof speaker producing LOUD audio that will even make your buddies take notice.



### DSC Position polling and Distress Calling

The most important reason to have a VHF radio on board your vessel is safety. The QUANTUM meets the internationally recognized requirements for RTCM SC-101 Digital Selective Calling. In an emergency the QUANTUM is capable of transmitting an automated Digital MAYDAY transmission that includes GPS position, date and time ( when connected to GPS. The QUANTUM also can transmit & receive DSC Urgency, Safety, Group and Individual calls.



ACTUAL SIZE



### Removable ClearVoice speaker microphone with 16/9 key and channel selection

QUANTUM features a uniquely designed waterproof microphone. Clear Voice, a STANDARD HORIZON innovation, provides the clearest possible transmission, by significantly reducing wind and engine background noise. In addition to its unique noise canceling capabilities, the QUANTUM's microphone features a speaker, up/ down and 16/ 9-channel selection.

**CLEARVOICE**  
NOISE REDUCTION TECHNOLOGY

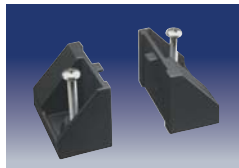
### DSC Position Request and Send

STANDARD HORIZON has pioneered the capability to poll and show another vessels position on the VHF s display. Standard Horizon has taken this feature one step further, if any Standard Horizon GPS is connected to the QUANTUM, the polled position of the vessel is shown on the display of the GPS chart plotter making it easy to navigate to the location of the polled vessel. This is a great feature for anyone wanting to know the position of another vessel, for example your buddy that is catching fish, or finding the location of a vessel in distress.

### Scan/Priority, Dual Watch, NOAA Weather Alert and more....

Scanning is a breeze using the dedicated MEM key which allows selection of channels you want to scan. The Quantum can be setup to scan any number of channels with or without priority channel. Want to scan between the user selectable Priority channel and another channel, simply rotate the channel selector knob to the working channel and press the DW key. The A/ B key allows programming in two of the most used channels for quick and easy recall.

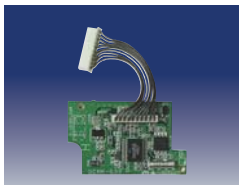
### OPTIONAL ACCESSORIES



**MMB-84**  
Flush Mounting Bracket



**CT-100**  
10-foot Extension Cable  
for RAM+ MIC



**CVS2500**  
Voice Scrambler



**RAM+ MIC**  
Remote Access microphone CMP25



**220SW**  
Great sound quality for loud hailer  
voice, horns, sirens and bells.

**240SW**  
Great sound quality for loud hailer  
voice, horns, sirens and bells.



**101W**  
White Extension Speaker

**201SW/SB**  
white / black  
Extension Speaker

**201SWZ/SBK**  
white / black  
Flush Mount Extension Speaker

### 3 Year Waterproof Warranty

Because the QUANTUM is built better, it's backed better. If the STANDARD HORIZON QUANTUM fails for any reason (including water damage) during normal use for the first 3 years of ownership, STANDARD HORIZON will repair or replace it free, without hassles or charges. If it fails for anytime thereafter in normal use, for as long as the original purchaser owns the radio, STANDARD Horizon's Lifetime Flat Rate and Customer Loyalty Service Programs will cover it.



STANDARD HORIZON



Marine Division of Vertex Standard  
US Headquarters  
10900 Walker Street,  
Cypress, CA 90630  
Phone: 714/ 827-7600  
Fax 800/ 552-6813  
Email: [marinetech@vxstdusa.com](mailto:marinetech@vxstdusa.com)  
Web: [www.standardhorizon.com](http://www.standardhorizon.com)

### SPECIFICATIONS

General	
Channels	All USA, International and Canadian
Input Voltage	13.8 VDC $\pm$ 20 %
Current Drain:	Standby 0.5 A Receive 1.5 A Transmit 5.0 A ( Hi ) ; 1.5 A ( Lo )
Dimensions	3-9/ 16 H x 9-1/ 16 W x 5-29/ 32 D ( 90 H x 230 W x 150 D mm)
Flush-Mount Dimensions	2-27/ 32 H x 8-5/ 64 W x 5-1/ 8 D ( 72 H x 205 W x 130 D mm)
Weight	3.2 lbs ( 1.45 kg)
Transmitter	
Frequency Range	156.025 to 157.425 MHz
RF Output	25 W ( Hi ) ; 1 W ( Lo )
Conducted Spurious Emissions	80 dB ( Hi ) ; 60 dB ( Lo )
Audio Response	within +1/ -3 of a 6 dB/ octave pre-emphasis characteristic at 300 to 3000 Hz
Audio Distortion	5 %
Modulation	16K0G3E, for DSC 16K0G2 B
Frequency Stability (-20° C to +50° C)	$\pm$ 0.0005 %
FM Hum and Noise	50 dB
Receiver	
Frequency Range	156.050 to 163.275 MHz
Sensitivity	20 dB Quieting 12 dB SINAD 0.35 $\mu$ V 0.25 $\mu$ V
Squelch Sensitivity ( Threshold)	0.13 $\mu$ V
Modulation Acceptance Bandwidth	$\pm$ 7.5 kHz
Selectivity:	
Spurious and Image Rejection	better than -70 dB
Intermodulation and Rejection at 12 dB SINAD	better than -70 dB
Audio Output	4.5 W
Audio Response	within + 2/-8 of a 6 dB/ octave

Standard Horizon reserves the right to make changes and enhancements to products at our discretion. Current specifications are therefore subject to change without notice.

### A FAMILY OF FINE STANDARD HORIZON PRODUCTS

STANDARD HORIZON is a leading manufacturer of technologically advanced feature rich Marine Electronics. Our broad line-up includes various models of VHF. Marine Stereos, Digital Instruments, GPS Chart Plotters and design advantages versus competitive models. Visit the STANDARD HORIZON web site at [www.standardhorizon.com](http://www.standardhorizon.com) for more details!

### A FAMILY OF COSMETICALLY MATCHED CHOICES

The GX2360S is one member of the family of marine electronics from STANDARD HORIZON that includes:

#### DIGITAL INSTRUMENTS



#### GPS CHART PLOTTERS



#### VHF RADIOS

