



# STANDARD HORIZON

## CHART PLOTTER / FISH FINDERS



**Nothing Takes To Water Like Horizon!**





**CP155C**

**CP175C**



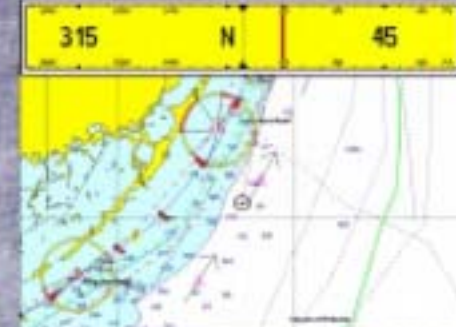
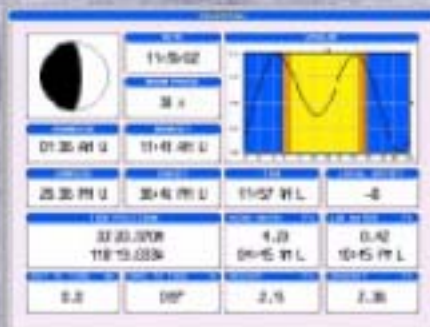
**WAAS GPS  
Antenna**

**5" Color**

Best value for the boater requiring full sunlight viewability with limited cockpit space.

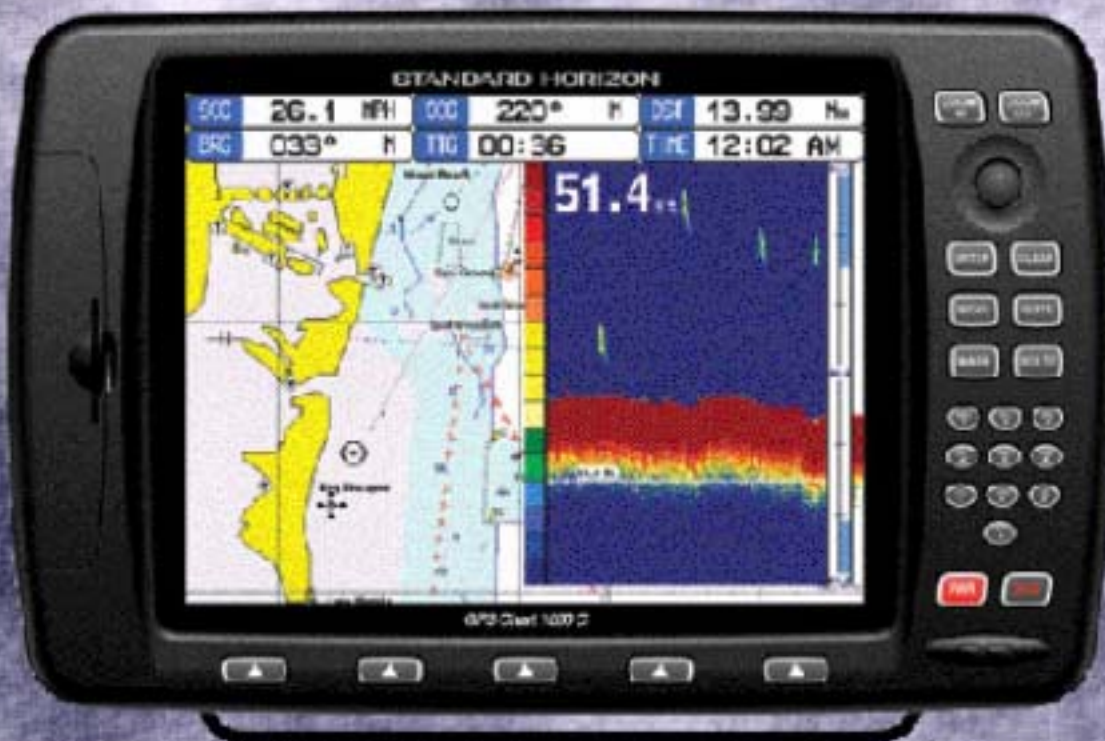
**6" Color**

Boasting a full 6 inch direct Sunlight Viewable LCD, Quick Disconnect bracket and dual C-MAP card slots for expanded coverage





# CP1000C

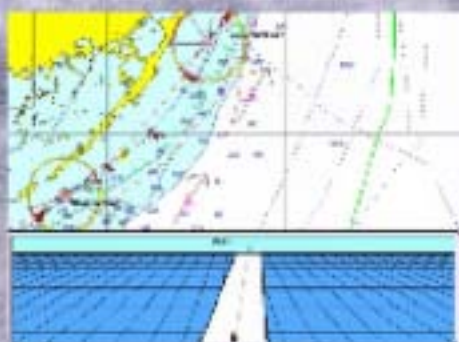


**Designed for C-MAP NT+**

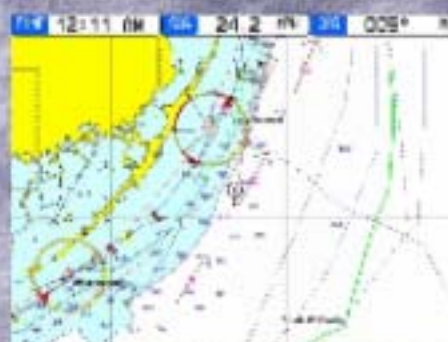
C-MAP has rattled-off an amazing "five for five" winning streak that dates back to 1999. When two additional NMEA honors from 1994 and 1995 are taken into account, C-MAP vector-based charts have been recognized as **Best Electronic Cartography** seven of the last ten years.

## 10.4" Full VGA Color

The CP1000C is STANDARD HORIZON's flag ship  
Direct Sunlight Viewable Color LCD  
Dual Video Camera or Video inputs  
Alpha-numeric keypad



315	N	45
25°02.027N	080°08.820W	
12:03 AM	1.0	005"
21:21	21.37	015"



21.0	
005°	015°





## WAAS 12CH GPS Receiver

All STANDARD HORIZON GPS Chart Plotters use WAAS receiver technology that improves accuracy, integrity and availability of the GPS fix. WAAS GPS delivers pinpoint repeatable accuracy to within 10ft of a vessels actual location. This technology allows every boater to obtain the accuracy of DGPS without the additional expense. The WAAS system currently covers the United States, Canada, Mexico and parts of South America.



## SUNLIGHT VIEWABLE

### The SUN is SHINING

Nothing beats the detail and impact of a color display. Featuring cutting edge transfective screen technology. The result is a display that delivers un-compromised bright, vivid color chart detail in the toughest application, direct sunlight.

The chart plotters from STANDARD HORIZON truly allow you not to worry where the sun is shining.

## SIMPLE OPERATION

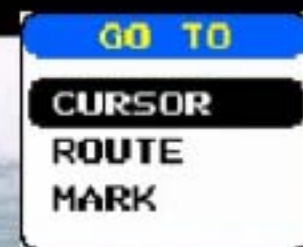


STANDARD HORIZON GPS Chart Plotters are based on a simple menu driven system, making them a friendly companion to professional navigators, first time boaters and everyone in between. A press of the MENU key allows you access to the many pages; Find Port Service, Wrecks, Obstructions, or coordinates. The General Setup menu allows setup of the most used features like disabling the key beep, setting up the time, and the units of measure. Customizing the chart is a breeze as there is a dedicated menu which allows selection of Full, Simple, Fishing or Low chart settings. For the more advanced, there is even a menu that allows you to select the items to be shown. The Advanced Setup menu allows you to customize the more advanced functions such as selecting between Lat/Lon or LORAN TD's and even configure the NMEA input/outputs.

## DEDICATED NAVIGATION KEYS



Using a GPS Chart Plotter has never been so easy. Each chart plotter has dedicated keys to place a mark or a Route directly on the CHART Page. The GOTO key allows you to navigate directly to the position of the cursor, a saved Route or a Mark.





## SUPPLIED WITH BRACKET AND FLUSH MOUNTING HARDWARE

Supplied with a bracket and flush mounting kit, allows you to customize the look at a NAV station or at your steering helm. And don't worry, all STANDARD HORIZON gray scale and color chart plotters are truly SUNLIGHT Viewable! For true versatility the CP175C has a quick disconnect bracket allowing you to remove the plotter and store it when you are not boating.



## VHF DIGITAL SELECTIVE CALLING and POSITION POLLING



The STANDARD HORIZON family of chart plotters all have the capability to be connected to STANDARD HORIZON VHF fixed mount radios with DSC polling capability. Simply connecting 3 wires between any STANDARD HORIZON



Plotter and the Quest+, INTREPID+, MATRIX, SPECTRUM+ or QUANTUM VHF, allows you to privately poll and display another vessels position on the display of the GPS. Additionally, STANDARD HORIZON Plotters can show the position of a vessel that has transmitted a VHF DSC Distress call. To take this one step further STANDARD HORIZON plotters have a DSC call directory that logs the DSC polled vessels positions and vessels that have transmitted a DSC distress call, allowing you to review at a later time.

## CUSTOMIZABLE SOFT KEYS



The soft keys located under the display of the CP175C and CP1000C allow direct access to the CHART, NAVIGATION HIGHWAY, CELESTIAL/TIDE and NMEA Pages. These keys can be easily changed allowing direct access to the GPS STATUS, DSC LOG DSC DIRECTORY, DEPTH, TEMP, WIND trend USER POINTS LIST and with an optional Fish Finder connected allows for instant access to Full page fish finder or Chart / Fish split screens.



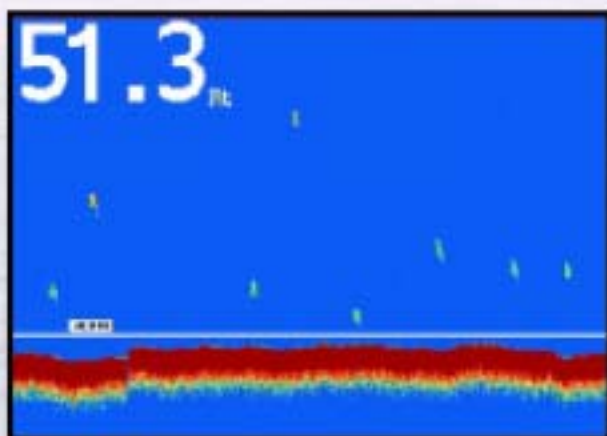
# 50/200kHz BLACK BOX FISH FINDER



## FF520

with

**Xducer**  
**I.D.**



Full page

The FF520 Digital Fish Finder option brings high-end fish finding capability to STANDARD HORIZON's WAAS GPS Chart Plotters making them the ideal choice for casual or professional anglers alike.

The professional grade FF520 50 and 200kHz Black Box Fish Finder's advanced Digital filtering eliminates unwanted noise and sharpens returned echos for enhanced separation and detection.

The unique "Xducer ID" technology allows the FF520 to automatically select 500 or 1000W depending on the optional transducer connected.

This technology also identifies the characteristics of the transducer, which the fishfinder uses to fine-tune its settings including power output and sonar sensitivity. No matter what the conditions you will be fine tuning your fishing rather than the fish finder.

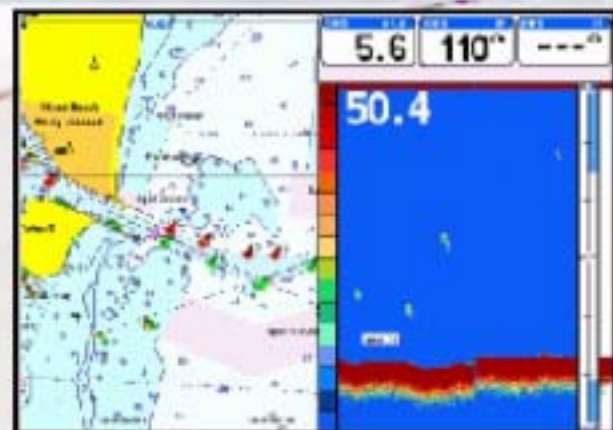


Chart / Fish

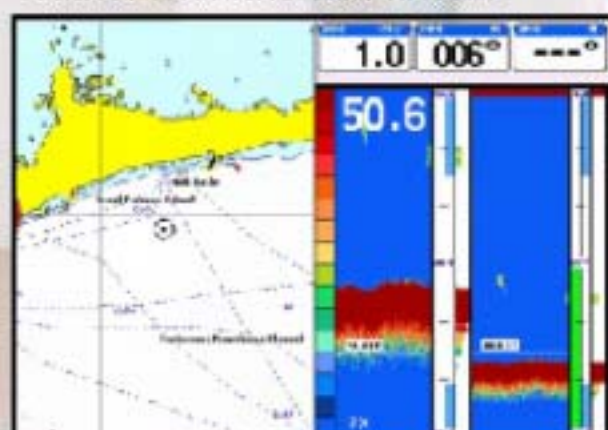


Chart / Fish Zoom



Optional Transducers



## SPECIFICATIONS

	CP155C	CP175C	CP1000C
Dimensions	7.2"Wx4.9"Hx3.2"D	9.2"Wx6.6"Hx4.3D	13.7"Wx9.1"Hx5.5D
Voltage Range	10-35VDC	10-35VDC	10-35VDC
Weight (LBS)	1.5	2	3
Current Draw	750mA	750mA	1.3A w/o video camera 1.5 with camera
Display Type	320X240 5 Inch Sunlight Viewable Color TFT LCD	320X240 6 Inch Sunlight Viewable Color TFT LCD	640x480 Full VGA 10.4 Inch Sunlight Viewable Color TFT LCD
NMEA Output	GLL, VTG, BWC, WCV, APA, APB, HDG, BOD, XTE, RMA, RMB, GGA, HAC, DSC, DSC		
Routes/Points	20/20	20/50	20/50
Tracks/Log Points	5/1000	5/1000	5/1000
User Point Icons	16	16	16
User Point Label	10 Character	10 Character	10 Character
User Points	500	500	500
Video or DVD input	NA	NA	Dual inputs

### 12CH WAAS GPS ANTENNA

Reacquisition time	Less than 1 Second
Hot Start	8 Seconds Typical
Cold Start	Less than 45 Seconds
Position Accuracy	Less than 10Ft 95% of time
Speed Accuracy	0.3 Knots RMS

### OPTIONAL FF520 FISH FINDER

Dimension	7.56"W x 2.19H x 5.03D
Frequency	50/200kHz
Max Depth	1200FT, 200kHz, 4000FT, 50kHz
Power Output	500 or 1000W depend on transducer
Voltage Range	10-16VDC



STANDARD HORIZON plotters are designed from the ground up to take the punishment of the marine environment. A plotter contained within this brochure fails for any reason (including water damage) during normal use for the first 3 years of ownership, STANDARD HORIZON will at its discretion repair or replace it for free. If it fails anytime there after in normal use, for as long as the original customer owns the plotter, STANDARD HORIZON's Lifetime Flat Rate Service and Customer Loyalty programs cover it. The flat rate is determined at the time for the original purchase.



[www.standardhorizon.com](http://www.standardhorizon.com)



**Marine Division of Vertex Standard  
US Headquarters**

10900 Walker St. Cypress, CA 90630  
Phone 714/827-2600 Fax 800/552-6813  
email: [marinesales@vxstdusa.com](mailto:marinesales@vxstdusa.com)