

## Frequency Adjustment

### Enter Test Menu:

Hold **【MENU】**+**【MODE】** key to power on and enter test mode, switch **【PUSH】** to choose test menu, press **【PUSH】** to enter test item, then switch **【PUSH】** again to adjust the value, press **【PUSH】** again to choose step size, press any key to exit.

Test device HP8921A setting: TX Interface

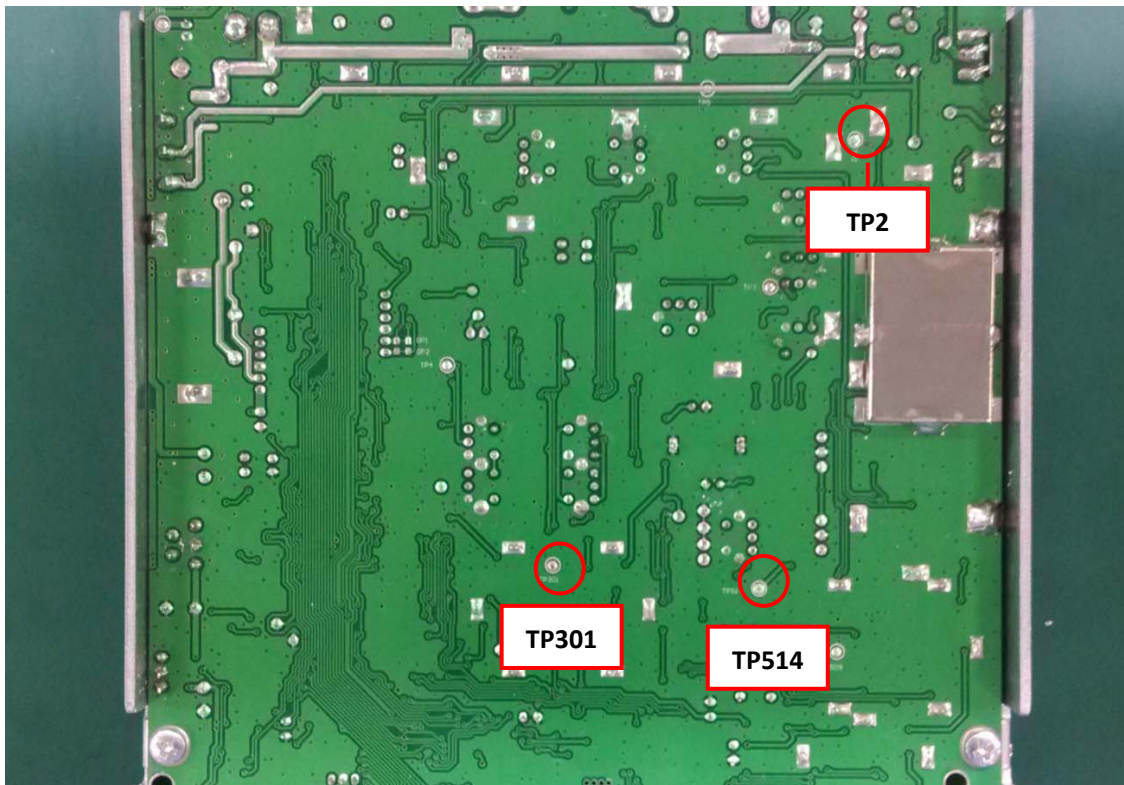
Tune Mode: Manual

Tune Freq: Input Freq. for testing

Input Port: Ant

Antenna connector for device: RF IN/OUT

Connector for testing pen: ANT IN



### 1. VCO Adjustment:

Enter test mode, FM mode, test point: TP2

- A. FREQ: Choose channel 4, adjust L807 to get frequency range  $38.555\text{MHz} \pm 10\text{Hz}$ , background noise  $< 40\text{Hz}$ .

**Note:** Do not use PUSH switch to adjust the value, only use L807. If the error is within  $100\text{Hz}$ , adjust the value  $\pm 70\text{Hz}$ .

### 2. BFO Adjustment:

Enter test mode, choose channel 6, test point: TP301

- A. Switch to FM mode, adjust frequency to  $10.695\text{MHz} \pm 10\text{Hz}$ , background noise  $< 40\text{Hz}$ .  
B. Switch to USB mode, adjust frequency to  $10.6973\text{MHz} \pm 10\text{Hz}$ , background noise  $< 40\text{Hz}$ .  
C. Switch to LSB mode, adjust frequency to  $10.6927\text{MHz} \pm 10\text{Hz}$ , background noise  $< 40\text{Hz}$ .

### 3. AFF Adjustment:

Enter test mode, choose channel 7, FM mode, test point: TP514.

- A. adjust frequency to  $10.240\text{MHz} \pm 10\text{Hz}$ , background noise  $< 40\text{Hz}$ .