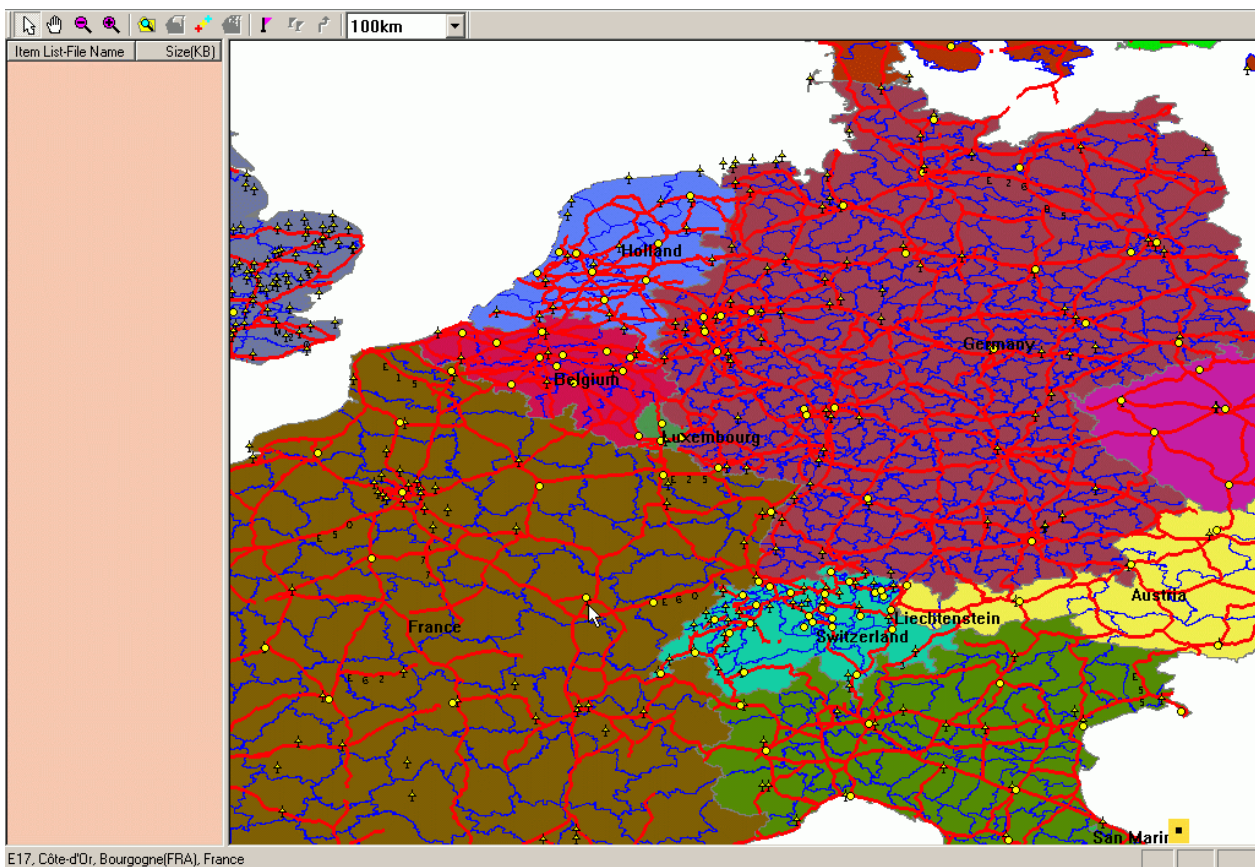




User Manual

MapShow

(Version 2.0.2)



© ALAN Electronics GmbH, 2004
Daimlerstr. 1 k
63303 Dreieich
www.map500.de / www.cte.it

System requirements

CPU	Pentium II or comparable processors
Memory	Minimum 64 MB, without the Europe map 16 MB
System	Windows 98, ME, 2000 and XP
Free hard disk memory	100 MB without maps, with maps up to 1.4 GB
Graphics card	VGA
Compatibility	GPS MAP 500 operating system from V2.02 onwards

Installation description

There are two possible installation procedures:

- § **Automated procedure by using Map 500 CD ROM with a full performance range, or**
- § **Manual procedure using the single mapshow.exe versions (restricted performance range), map and program downloaded from the internet**

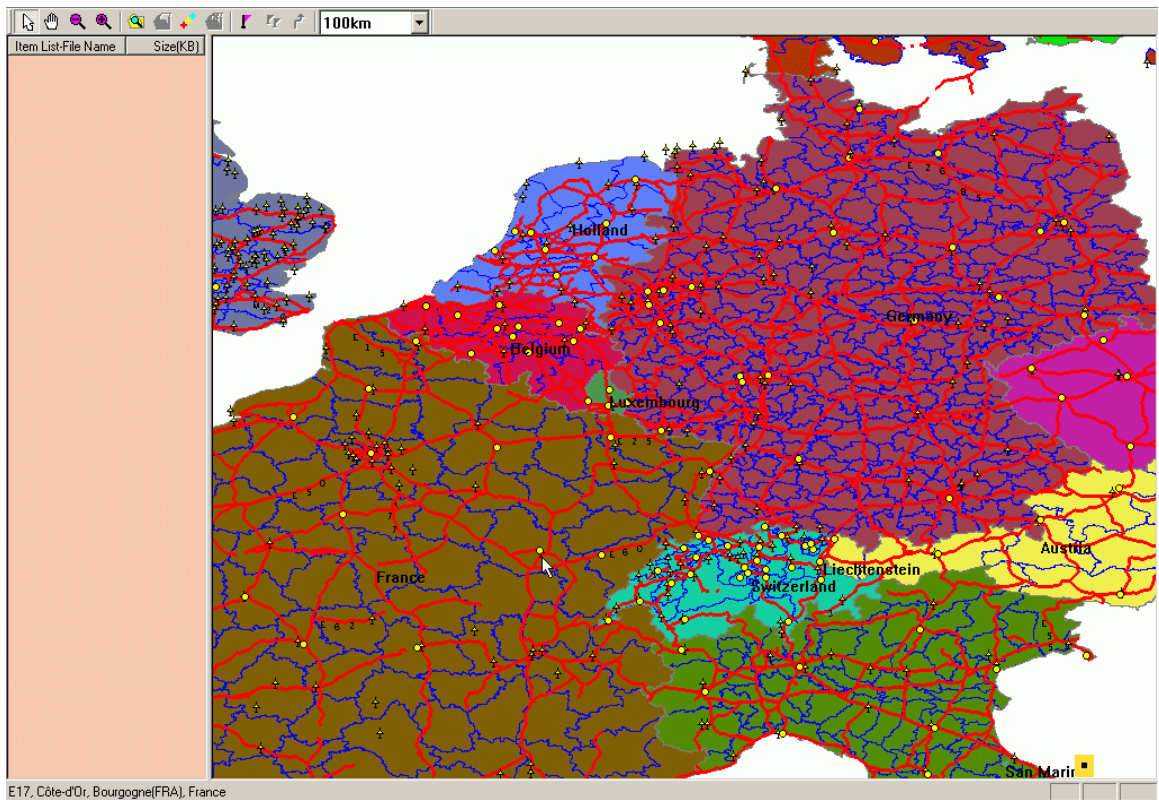
While using the automated installation routine a general Europe map will be installed on your MAP Show. This map enables the user to comfortably select and arrange single maps.

While using the manual installation routine single maps need to be selected from the local hard disc directory. Preconditions are basic geographic knowledge of the necessary areas to assure correct map selection by the user.

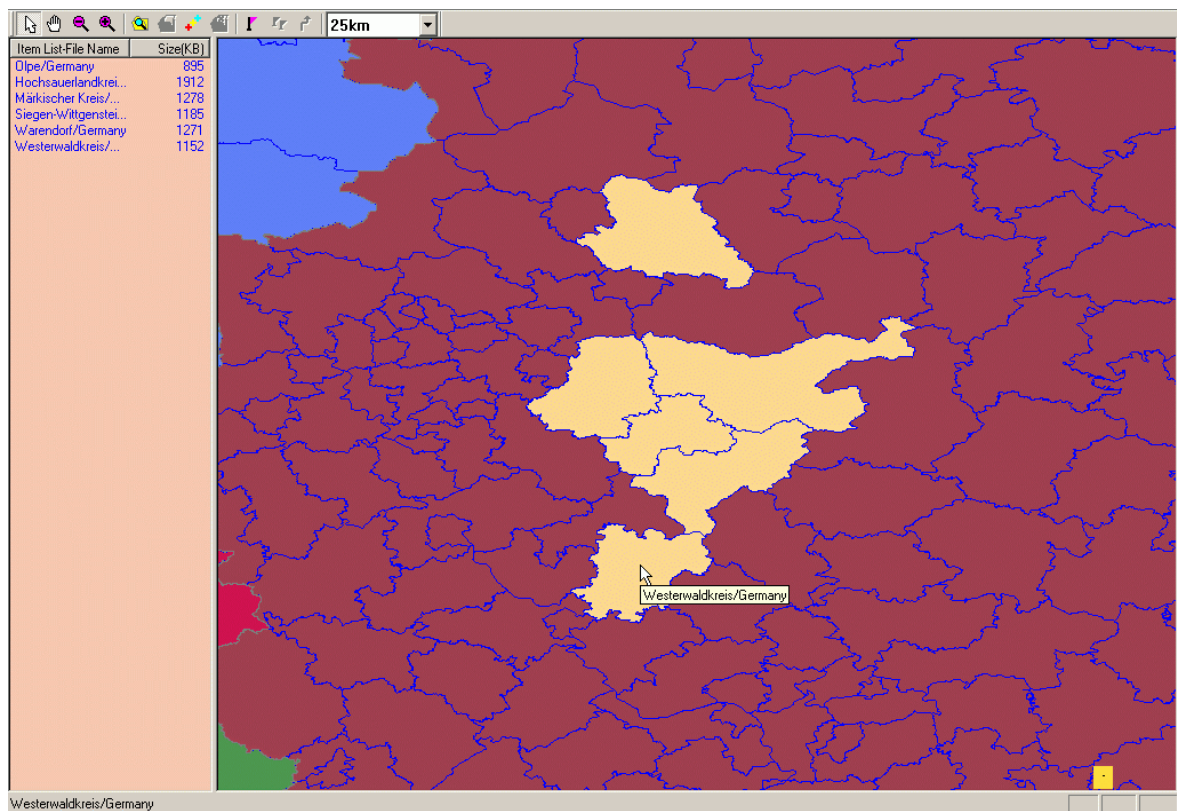
We recommend to use the comfortable automatic installation procedure. After inserting the CD ROM follow the instructions on the screen. If the CD doesn't automatically start, search for **setup.exe** on the CD ROM and start the application with double-click. We recommend to **accept the proposed folder structure**. Otherwise the successful installation of the necessary maps can not be guaranteed.

A menu item will be created in the Windows start menu. Both MapShow, the operating instructions, additional notes as well as the reinstallation routine can be selected here. As standard the German language version is installed. In addition to that the English, French, Spanish and Italian MapShow versions can be installed at any time.

After total installation the Europe map will be displayed



Example for a zoomed Europe map

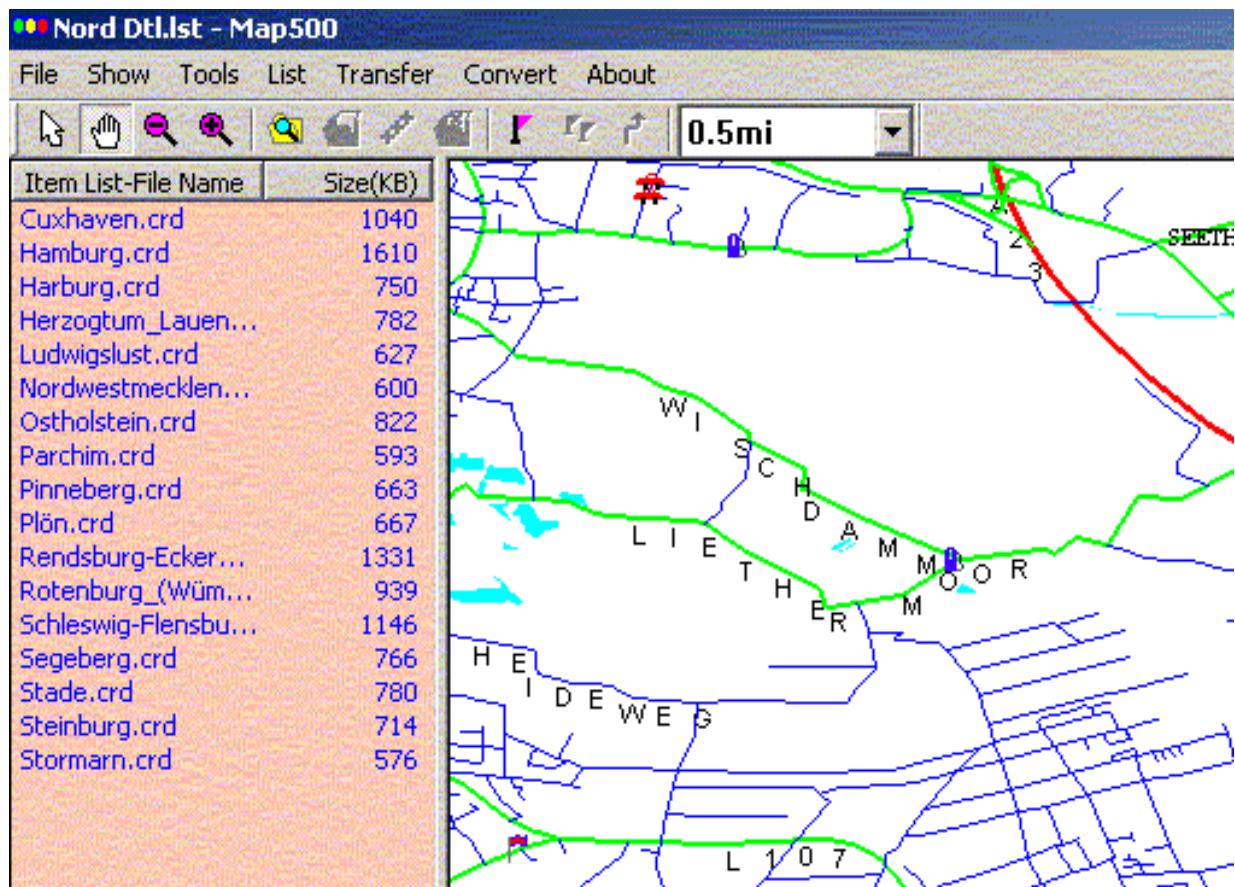


The combination and saving of detailed maps for the GPS Alan Map 500 is easier by using the complete Europe map. While selecting the required region, the corresponding card names will appear in the left list field. At the end the whole list needs to be stored as a **LST** file(**File, save as**) or directly be transferred to the Compact flash card plugged into the GPS (**transfer, PCà GPS, map view**).

Select and view a single map from the Europe map

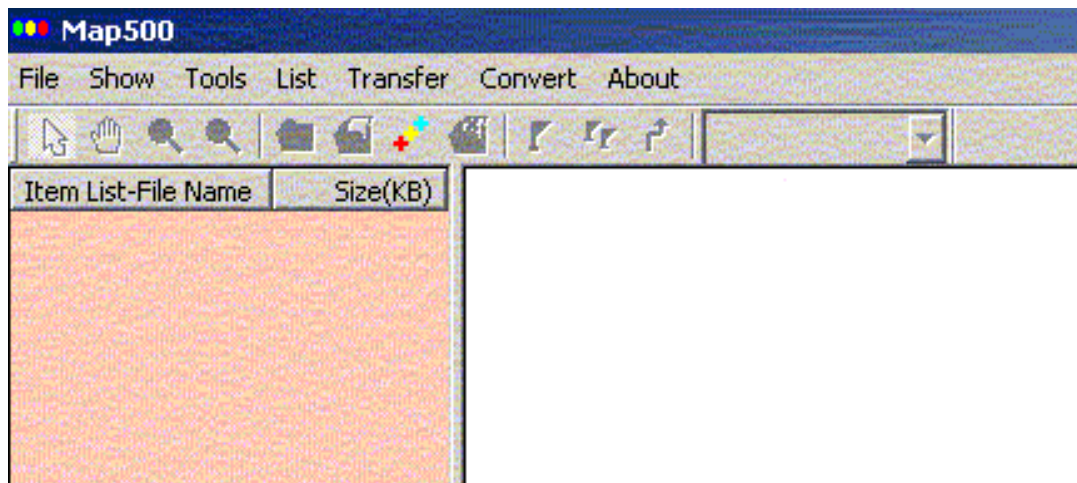
Do you only want to view a single detailed map first?

- § Place the mouse pointer on the desired place of the complete version of the Europe map
- § Press SHIFT button and keep it pushed down.
- § Double click with the left mouse button on the desired map.
- § The detail card is published on the screen.
- § Release the SHIFT button.
- § To leave the detailed map view click on the X of the upper right edge of the window.



Tip: Although the GPS ALAN MAP500 supports Compact flash cards up to 512 MB we recommend to install only those maps and regions to a LST file which are necessary for the planned tour. This will lead to faster response times of the Map 500 (e.g. during Compact flash card exchange or scrolling during object search).

The MapShow user interface without the Europe map



The screenshot above shows the map show user interface without installed Europe map (e.g. downloaded **mapshow.exe** from internet). It is possible to save other map show language versions as a single “exe” file on your local hard drive and immediately start MapShow without starting the installation procedure again.

With **File** and **Open...** single maps can be started from the local hard disc. New Alan maps V1.1 are available in compressed form on both CD ROM 1 and 2. Please note that the new ALAN maps V1.1. needs to be installed first before the individual maps can be used in the CRD format. Installed maps can be found at:

C:\Program Files\map500\europa

Self developed vector maps can be used in case of they are compatible with MapEdit.

Description of the individual functions (applies to all kinds of installation)

Open, save as, close, last used file, exit

To open and close files, save map files and exit the program.

View

Delete, show streets, show POIs, symbol choice, point .., hide ..., show (Cou file), hide (Cou file).

This menu item allows the user to hide and show information in the map. The "Cou" file is the automatically displayed Europe map with zoom functionality.

It is possible to zoom inside the map to exactly select districts, which should be transferred to the compact flash card of the Map 500. While moving the mouse pointer over the maps the district or region name will be displayed. Selected maps will be displayed in the left hand map list field.

Tools

pointer, move, zoom +, zoom -, object research, new waypoint, waypoint list, route und metric system.

Viewing of POIs (Points of Interest, important addresses), waypoints or routes, increase and reduce the map view, search function according to map information, acquisition of way points or routes and waypoint lists.

List

Adding element, removing element, adding several elements

This menu items is only necessary in case of the Europe map is hidden. With this menu item single detail maps can manually be added and removed by the user. The German maps always contain exactly one district or town. The new list needs to be saved as "List file" and synchronised with the GPS Alan Map 500.

Transfer (Data transmission)

GPSàPC, PCàGPS

The function PCàGPS is used to transfer operating system programs, documents, maps, track logs, way points and routes from the PC to the Alan Map 500. With the function GPSàPC track logs, way points or routes can be transferred from Alan Map 500 to the PC.

Convert

Track Log TLG à TRL, Waypoint Route WRTà WPR

With the function Convert Track Log TLG à TRL or Waypoint_Route WRTà WPR it is possible to convert old Track Logs, Waypoints and Routes into the new file structure. From the MapShow Versions 2.0 and the Map500 operating systems V.2.00 onwards the Track Logs are saved as **TRL**-files or the Waypoints and Routes are saved as **WPR**-files. The old

TLG and **WRT** files also can be converted with the Software MapEdit.

About Map500

This function shows information about the MapShow version and depending on installed language version contains a link to the ALAN / CTE homepage.

Data transfer between PC and GPS, as well as arrangement of Map files

Basics data transfer

To transfer files a correct connection of the data cable is necessary. Make sure that cables are correctly attached between PC and ALAN MAP 500. Do **not activate** the **NMEA function** at the GPS device during data transfer between GPS and MapShow! The NMEA function is only provided to transfer GPS position data to other devices or software (e.g. Moving Map or Routing software like Marco Polo or Maptech nautical maps or others).

Do not change any settings at the COM interfaces of your PC. MapShow automatically detects the used COM interface.

Note: Always follow the proposed sequence: First of all start the data transfer at the GPS handheld. The GPS handheld sends out identification signals. Secondly activate the data transfer at the PC, MapShow searches for identification signals on all COM interfaces and automatically starts the right connection. MapShow is able to detect COM Port numbers between COM 1 and COM 9 automatically. However, we recommend that COM Port numbers should stay below COM 6. You can check the COM port in the Windows hardware section (open control panel)



Without RS232 interface a separate USB connection cable is needed. Please only install the correct USB cable driver (the following operating systems are supported: Windows 98, Me, 2000 and XP). The USB driver simulates a COM interface ("**Profilec USB to serial interface**") which will be used by MapShow. The newest driver can be downloaded from our internet page at **www.hobbyradio.de/GPS** at any time.

Make sure that enough battery capacity is available to ensure that synchronisations between the Map 500 and PC won't be interrupted. This specially counts during transfer of a new operating system version.



Start of the data transfer at the GPS device Map 500

Connect the MAP 500 with the PC by using the RS 232 interface cable (optional USB connection cable). Below most of the relevant transfer cases are described:

Software update (operating system, also called firmware)

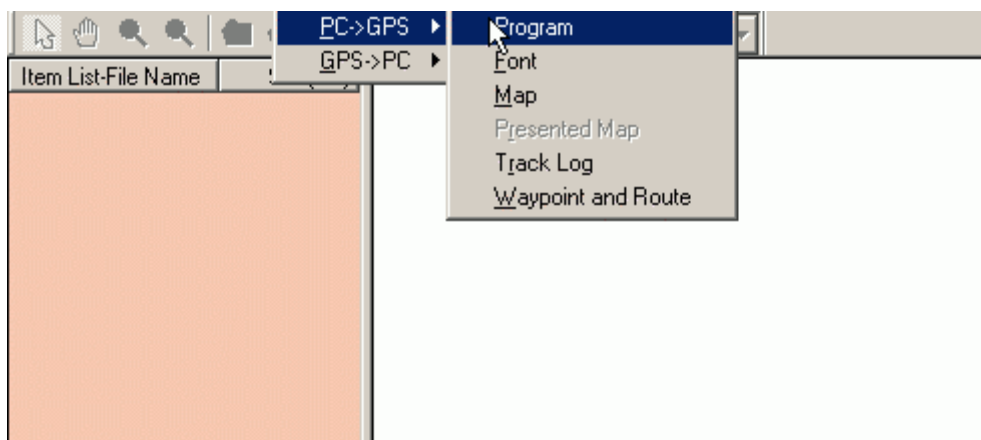
- Turn off the GPS equipment.
- Push down both buttons for 2 seconds  and .
- The Boot-Loader will be displayed:



- Move the pointer to the button **Serial Load Program** and confirm with  or cancel the function with . The following message will be displayed

Waiting for command... ..

- Now you can start the transfer at the PC!



Choose the program file (e.g. V202za.bin) from the local hard disk directory. Confirm with OK, before the new operating software is loaded the old version will be deleted from the Map 500. After successful operating system update the MAP 500 automatically turns off. If a problem should occur during transfer, stop MapShow, take out the batteries from the Map 500 for a moment, insert them again and start the boot sequence once more.

Download fonts, maps, track logs, way point & routes and upload track logs, way point & routes


Note: all data transfer actions needs to be started at the GPS device first.

- From each page it is possible to press the button  and chose **Main menu** (or press two times ),

confirm with . The main menu appears. Choose **Store** and confirm with .

- Press the button  to get these buttons **PCà GPS Font**, **map**, **Track**, **Wp & Rt**, or **GPSà PC Track** and **Wp & Rt**.



- Chose the desired function and confirm with .
- The following screen will be displayed



- Now start the data transfer at the PC.

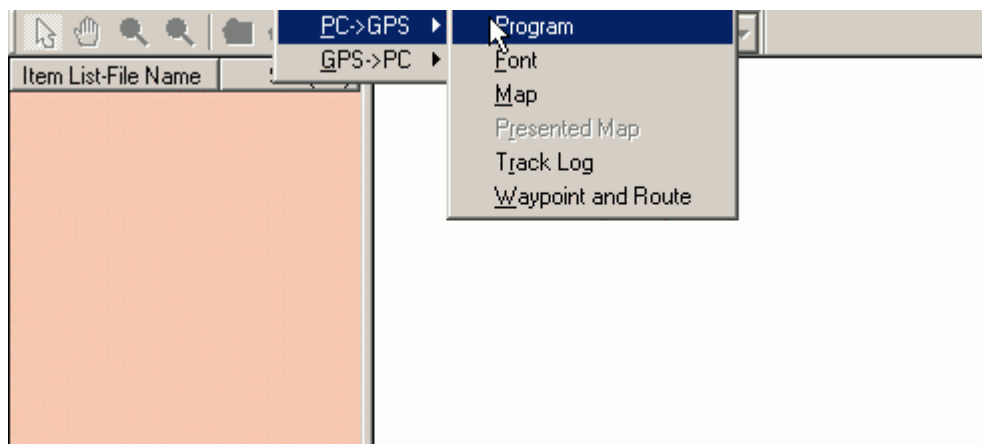
To finish the up- or download press the button  at the GPS equipment. After successful synchronisation of new operating system software (Firmware) the GPS equipment turns off.

Procedure at the PC

Note: make sure that the data transfer process is started at the ALAN Map 500.

Transfer program (operating system software), fonts, map, track logs and upload track logs and way point & route

- Start the program MapShow and click on **Transfer** in the tool bar



Execute the following commands:

- **Transfer program:**

At first carry out the settings at the MAP 500.

- Choose **Transfer/ PCà GPS** and **Program**. Select the desired operating system file by double clicks (*.bin).
- The update for the operating system will be loaded.

Note: The update must be started again in case of not 100% of the data are transferred to the handheld or the synchronisation was aborted.

Transfer language sign files

Is used to transfer other language sign files (e.g. Chinese). ***Do not use in European Versions!!***

- Go to **Transfer, Download, Language Sign** and choose the desired fonts (double-click on *.fnt file).
- Click on **Open**. The file will automatically be transferred.

The function download fonts refers to fonts like Russian, Chinese, Thai, Arabian, Korean or Japanese and is usually not necessary in Central Europe.

Transfer map (combined and saved groups of detailed maps):

- Click on **Transfer** and choose **PCà GPS**.
- Click on **Map** to choose the **LST** file by double-click.

Single or combined maps can directly be transferred from MapShow towards the compact flash card by using the data transfer cable. In order to transfer the selected maps choose the menu item **Transfer, Map View**. Please pay attention to the limited data transfer rate of the RS 232 interface!

Transfer Track Log

- Click at **Transfer** and choose **PCà GPS**.
- Click at **Track Log** and choose a **TRL** file (double-click). The file will automatically be transferred.

Transfer Way Point and Route

- Click at **Transfer** and choose **PCà GPS**. Click on **Way Point and Route** and choose a **WPR** file (double-click). The file will automatically be transferred.

During the data transfer the following screen will be displayed:

finished: xy %

MAP 500 ESC- button to Break off

As soon as the procedure is completed (100% fulfilled), the screen disappears.

Note: download function of maps: (during PC operation)

- Only **one single LST** file is allowed to be saved on the compact flash card of the MAP 500.
- To save several maps on the PC use the function **File, Save as**. Every CRD map in the element list will be converted and saved as **one LST file**.

Two options are available at **Transfer/ PCà GPS**:

- Map view:** directly transfer the current files from the detailed map list (left field in the MapShow display) to the compact flash card in the MAP 500
- By selecting **Map**, an already saved **LST** file can be transferred.

Note: If the cable is defect or not correctly attached to both interfaces, the following screen appears. The same error message also appears if the transfer order was not right, such as the transfer was started at the PC first:

Check COM Port

Transfer GPSà PC from Track Log or Waypoint / Route

- Click at **Transfer** and choose **GPSà PC**. Click on **Track Log** or **Waypoint and Route**.
- Enter a Filename and File to save the Log and confirm with **Save as**.

The following screen appears:

finished: xy %

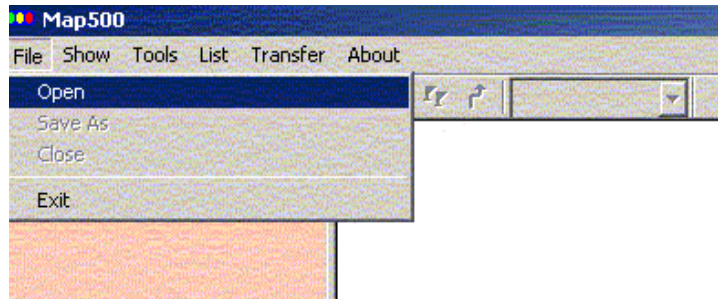
As soon as the process is completed (100% fulfilled), the screen disappears.

Note: If the cable is defect or not correctly attached to both interfaces, the following screen appears:

check COM Port

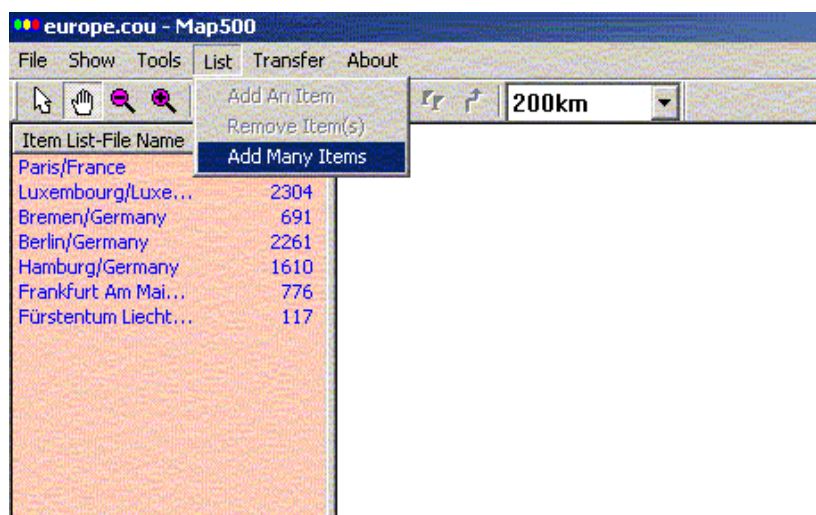
Manual combination of maps without the Europe map

Open and insert **CRD** files:



- Click on **File** and **Open** to select maps. It is possible to read all **CRD** or **LST** files. Enter **CRD** or **LST** in the field filename, then select the file from the left column.
- Open the **CRD** file. The map will appear in the right window. To add the opened map to the element list click on **List** and **Add element**. Repeat the procedure to add further maps to the element list.
- Click on **File/Save as** to save the combined maps as one **xxx.LST** file. In the following window you can choose where the file should be saved and customise the filename.

Opening and combining of CRD files (without Europe view):



- To open several **CRD** files and automatically add them to the list of elements click on **List, Add Several Elements** and select the required files. The selected files are automatically added to the list of elements (left field).
- Click on **File/Save as** to save the combined maps as one **xxx.LST** file.
- Click on **Transfer, PCà GPS** and **Map View**. All selected maps will immediately be transferred to the compact flash card.
- To cancel the map selection, mark the desired map, click on **List** and **Remove Element**.
- To transfer a saved map (LST format), choose **Transfer, PCà GPS** and **Map** instead of **Map View**.

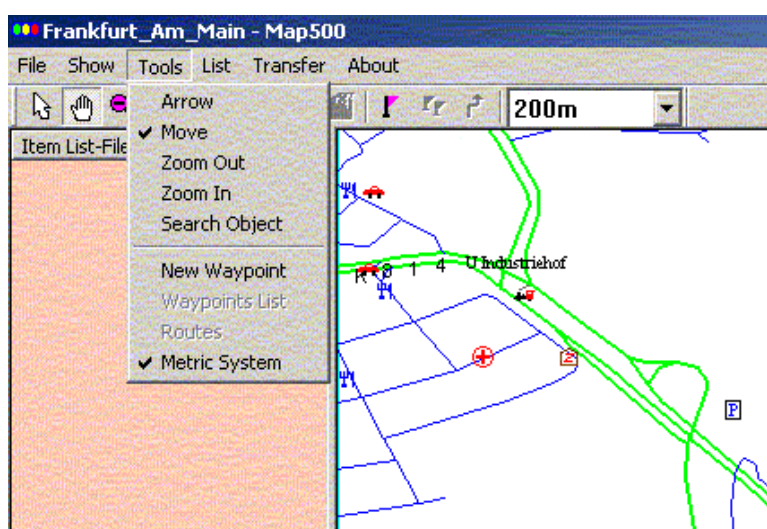
Note: The procedures above only describes the data transfer with the RS232 data cable to the compact flash card inside the Map500. Due to the limited band with of the RS232 interface the data transfer of large map files may results in relatively long synchronisation processes. We recommend you to use a **compact flash card reader or PCMCIA notebook slot** to transfer maps to a compact flash card. These adapters are available at relatively low costs and provide multiple band width and high speed compared to the RS232 interface.




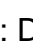
Special operating system to save files of Way Point/Routes and Tracklog file on compact flash cards (e.g. V202ZA-CF.bin)

Through our service download WebPages (www.hobbyradio.de/GPD/Map500) special OS versions are available which enables the user to directly store all **WPR** and **TRL** files to the inserted Compact flash card instead of to the internal MAP 500 memory. The main advantage is, that data transfer of the above mentioned file types does not require the RS232 or USB data cable. Users who store their different tours on separate compact flash cards always have the customized way point and track information at hand. This operation system version requires a compact flash card inserted in the device.

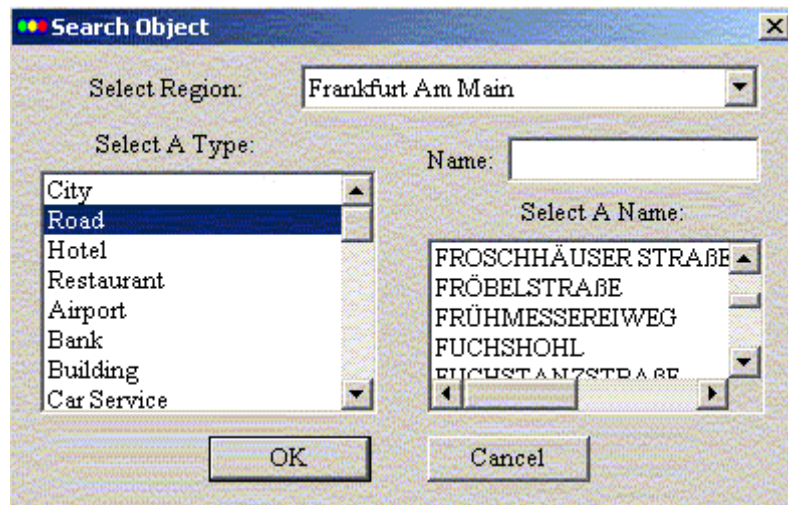
Further functions


Tools

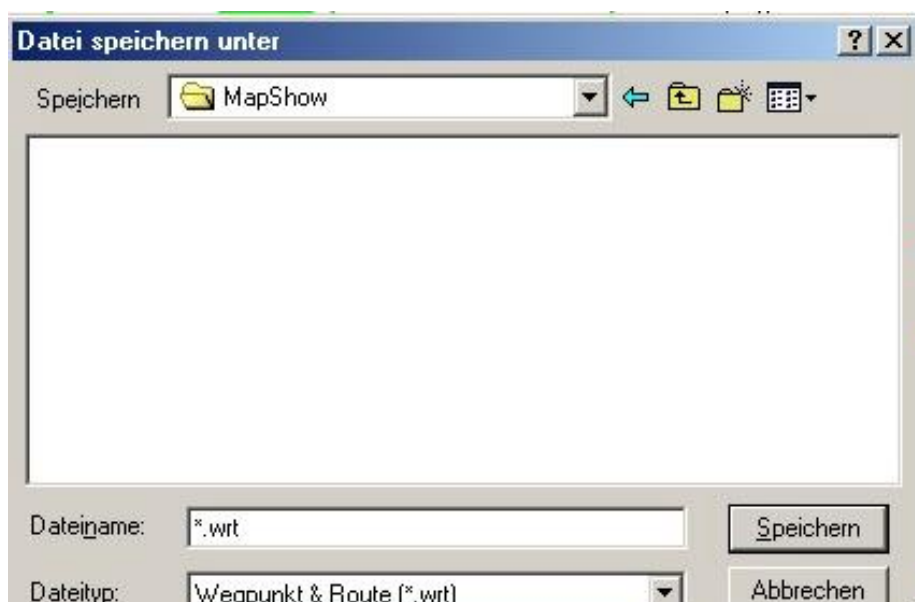


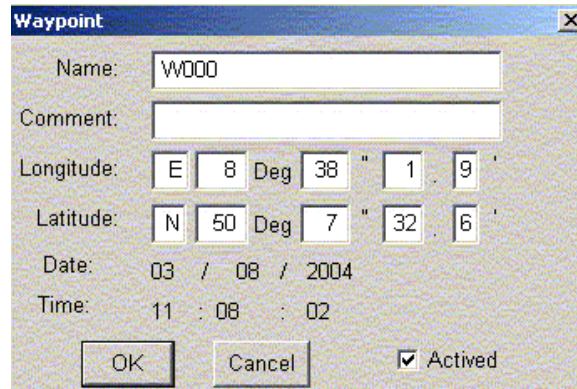
- **Tools/Pointer** or symbol  : By selecting any position available information will be displayed (longitude, latitude, street names, ...)
- **Tools /Move** or symbol : move map
- **Tools /Zoom +** or symbol : Increasing the map scale
- **Tools /Zoom -** or symbol : Decreasing the map scale

Tools /search object or : searches for any object in the open map file .



- **Tools/New Waypoint** or symbol : with these tool a new waypoint will be created.





Waypoint

Name: W000

Comment:

Longitude: E 8 Deg 38 " 1 9 '

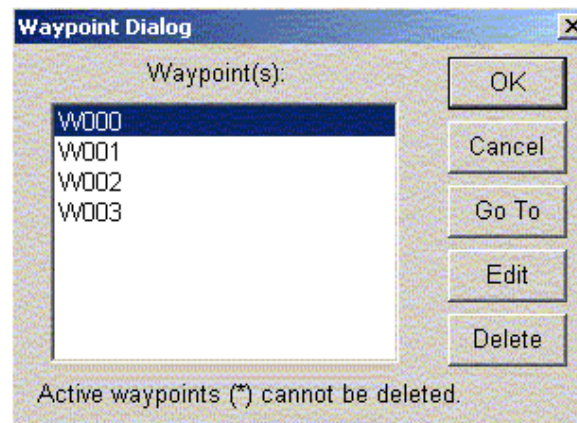
Latitude: N 50 Deg 7 " 32 6 '

Date: 03 / 08 / 2004

Time: 11 : 08 : 02

OK Cancel ☒ Activated

Tools/List of Waypoints or symbol . List all recorded waypoints.



Waypoint Dialog

Waypoint(s):

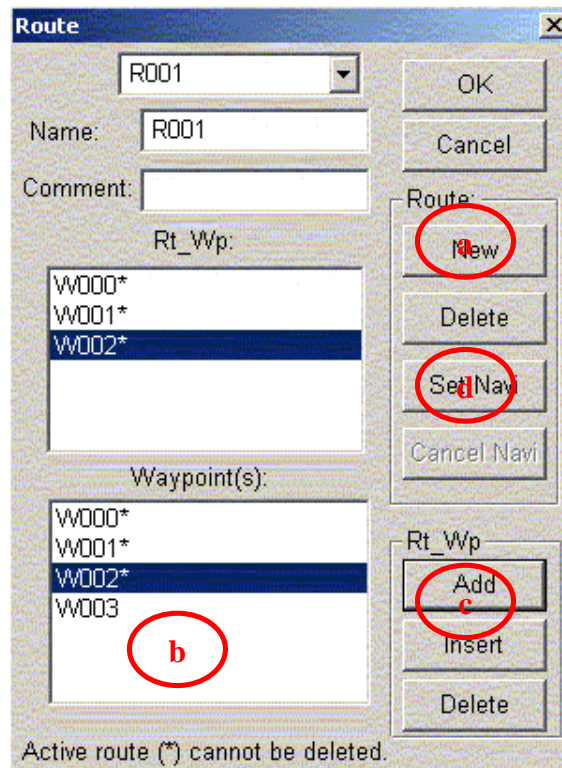
- W000
- W001
- W002
- W003

OK Cancel Go To Edit Delete

Active waypoints (*) cannot be deleted.

Tools/Routs or symbol  : To record new routs.

- New:** Record a new route starting by R001
- Chose waypoint (W001,W002,.....)
- Insert the waypoints in „Rt_WP“.
- Click at **Set Navi**.



Route

R001

Name: R001

Comment:

Rt_Wp:

- W000*
- W001*
- W002*

Waypoint(s):

- W000*
- W001*
- W002*
- W003

OK Cancel

Route:

New Delete

Set Navi Cancel Navi



Rt_Wp:

Add Insert Delete

Active route (*) cannot be deleted.

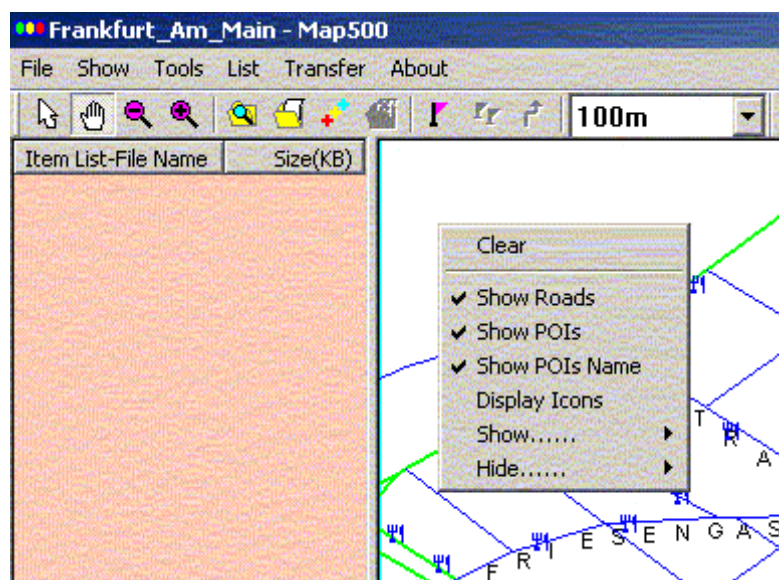
- **Tools/Metric System:** Sets the standard for the Distance scale (meter or english miles).
scale: **Metric:** 100m, 200m, 500m, 1km, 2km, 5km, 25km, 100km, 200km or
Miles: 0.1mi, 0.2mi, 0.3mi, 1mi, 2mi, 5mi, 25mi, 100mi, 200mi

Note: The maximum zoom of the Map 500 is 50 m. All other zoom steps are similar to the MapShow.

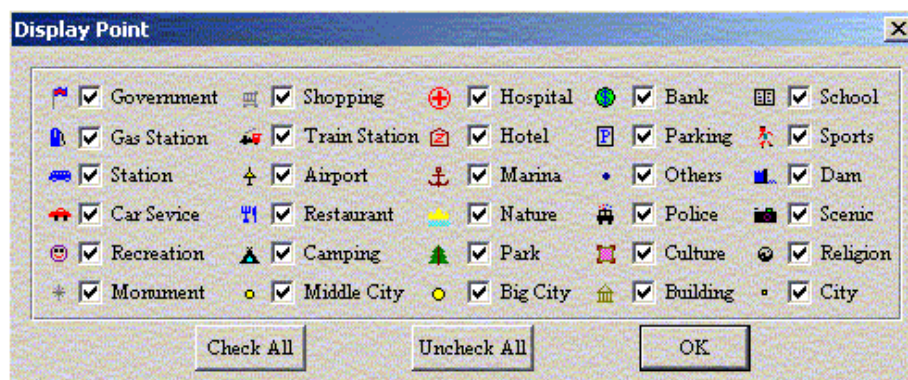
- **List/Add Elements** or   ”: add maps (to transfer or save maps with new file name)

- **Context**

Open the menu context by a right mouse click at the open map file:



- **Show streets:** shows all street names at the open map file.
- **Show POI:** shows all points of interest in the open map file.
- **Display Icons:** Chose of all Icons in the open map file.



- **View:** show/hide all kinds of POIs or streets, if the functions **show POIs** or **show Streets** was chosen.
- **Show/Track Log:** open the transmitted track log (**TRL**).
- **Show/Waypoints_Route:** to open the **WPR** files, which include Waypoints & routes.
- **Hide/ Track Log:** hides loaded track logs.
- **Hide/ Waypoint & Route:** closed all **WPR** files, which contains waypoints & routes.
- **Hide/ searched point:** hides all POI' s in an open map file.

Notes for the Alan detail maps:

Alan detail maps are delivered separately from the Map 500 as a set of 2 CD ROM. Each of these CD's can separately be installed at the PC, like the Map 500 CD. In case of the proposed folder structure was accepted during the Map 500 installation the detailed maps will automatically be installed into the right folder.

The installed and therefore uncompressed maps can be found in the folder called Europe and used on own behalf. If uninstalled maps are selected in MapShow the following error message will appear:

Insert the other disk

The message above implies that selected maps can be installed from CD ROM at any time. Detailed maps (from software version 1.1) can easily be implemented. Precondition: proposed folder structure is used!. The map folder name must be **Europe**.

The Europe map can't be used in case of the proposed folder structure was not accepted and maintained by the user or single detailed maps from third sources needs to be implemented. To manually open the necessary files click at **File, Open** and search for the map on the hard disk.

For specialists: CRD maps can be also edited, drawn and modified with the shareware **MapEdit** which can be downloaded and registered on **www.geopainting.com**. A trial version is delivered together with our Map500 CD. The trial version can convert Waypoint / Route and Tracklog files (old and new types) into other often used formats, while editing CRD maps is only possible after registration.

ALAN has also issued a **limited Map 500 edition** CD ROM (e.g. Map 500 V1.2 D), which only contains all the German detail maps of the European collection.

For testing purposes the Frankfurt/Main map is included at the normal Map 500 installation. The updated documents can be downloaded from our websites 24hours/7days per week. Please also visit the GPS Forum at our homepage **www.alan-germany.com**!

Thank you for choosing the ALAN Map 500.

©ALAN Electronics GmbH, May 2004

Daimlerstr. 1 k

D- 63303 Dreieich

Hotline 06103 9481-30

Fax 06103 9481-60

e-mail: **info@alan-germany.com**

www.map500.de oder **www.alan-germany.com**

Download-Server: **www.hobbyradio.de**